

## Applications

Please submit your application digitally before 26 March 2017, including:

- Detailed curriculum vitae
- Certificates of bachelor's degree or equivalent, and a German or English transcript thereof
- School-leaving certificate with transcript
- Proof of student status (summer semester 2017)
- Level of knowledge in the above-mentioned disciplines
- Special interest in a particular field of work
- Motivation letter
- Detailed recommendation by at least one university lecturer

Please apply online at:

[gsp.fz-juelich.de/application](http://gsp.fz-juelich.de/application)

Receipt of your application will be confirmed by e-mail. Candidates will be selected after the closing date. Notification of acceptance will be sent by 29 April 2017.

Supported by



## Dates

Closing date for applications: 26 March 2017

Start of the programme: 7 August 2017

Programming course: 8 - 18 August 2017

Colloquium: 4 October,

5 October 2017

End of the programme: 13 October 2017

## Further Information

Jülich Supercomputing Centre  
Institute for Advanced Simulation  
Forschungszentrum Jülich

Tel.: +49 2461 61 8714

Fax: +49 2461 61 6656

E-mail: [jsc-gsp@fz-juelich.de](mailto:jsc-gsp@fz-juelich.de)

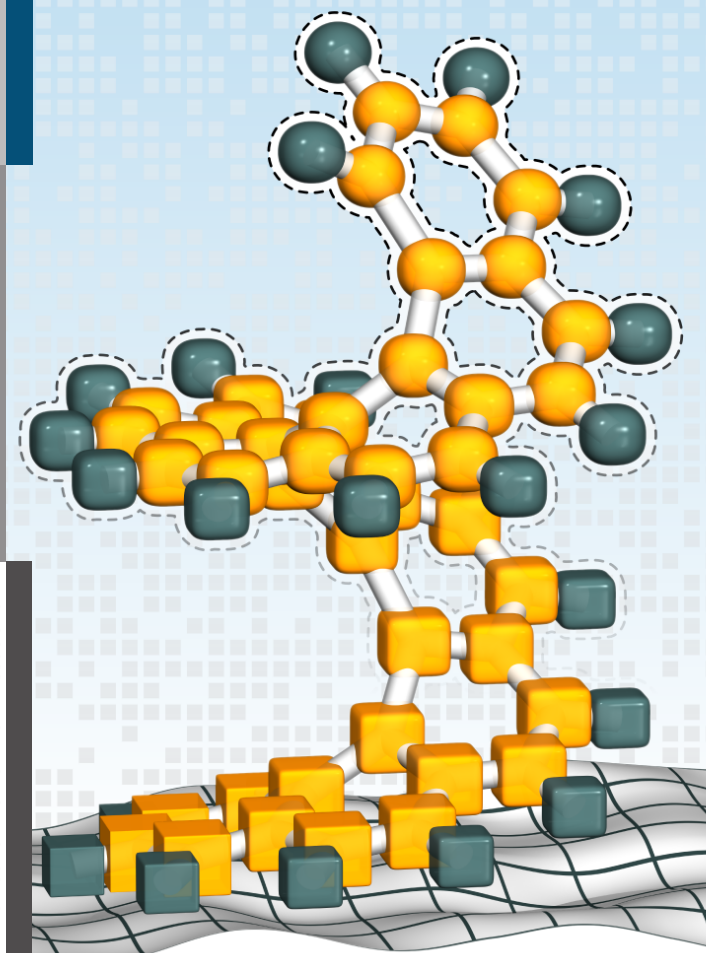
Contact: Ivo Kabadshow

**Closing Date**  
**26 March 2017**



[www.fz-juelich.de/ias/jsc/gsp](http://www.fz-juelich.de/ias/jsc/gsp)

Member of the Helmholtz Association



## Guest Student Programme 2017

Jülich Supercomputing Centre,  
7 August - 13 October



## Our Programme

In order to give students the opportunity to familiarize themselves with various aspects of scientific computing as early as possible, the Jülich Supercomputing Centre (JSC) is once again organizing a programme for guest students in the 2017 summer vacation. The programme is supported by CECAM - Centre Européen de Calcul Atomique et Moléculaire and IBM. It targets students of science and engineering, informatics and mathematics who have already completed their first degree but have not yet finished their master's course.

The students will work together with scientists from JSC on topics of current interest in research and development. Depending on their previous experience and interests, they will be involved in various fields of work, for example:

### Computational Science, Applied Mathematics

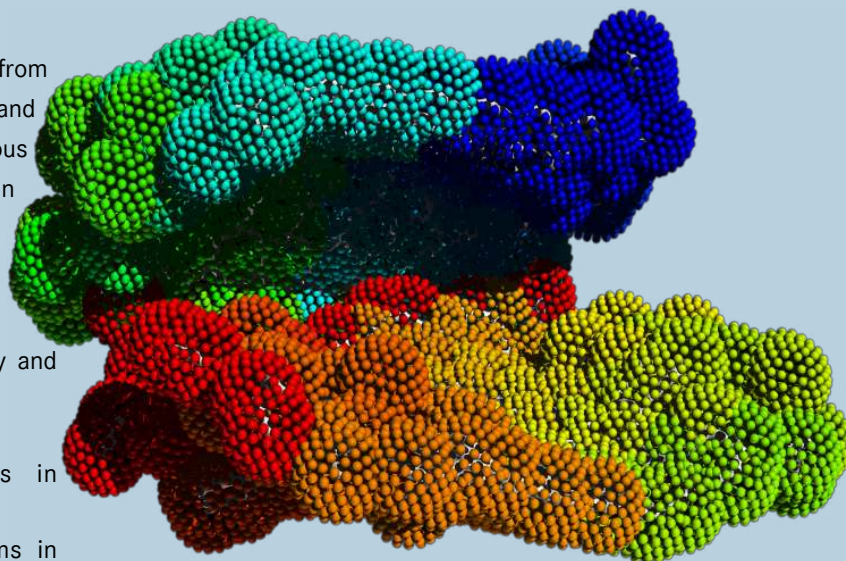
- Modelling and simulation in physics, chemistry and biophysics
- Techniques of parallel MD simulations
- Modelling, simulation and data analysis in neuroscience
- Performance evaluation of parallel algorithms in linear algebra
- Parallel computational procedures in quantum chemistry and structural mechanics
- Mathematical modelling, statistics and data mining

### Computer Architectures, Distributed Computing

- Distributed computing, uniform and secure access to IT resources
- Cluster operating systems & network management
- High-speed data networks & data management

### High-Performance Computing, Visualization

- Performance analysis and optimization of parallel programs
- Programming of hierarchical parallel computer systems
- Distributed applications, interactive control and visualization
- Virtual reality techniques for visualizing scientific data



The programme will run for ten weeks from **7 August to 13 October 2017**. The students will be able to use the supercomputers at JSC, including the Blue Gene/Q system JUQUEEN, which is one of the TOP 20 supercomputers in the world. They should naturally be familiar with computer-oriented areas of their subjects. In addition, they should also have practical computer experience including a good knowledge of programming with C, C++, Python or Fortran on Linux systems.

## Programme Schedule

The programme starts with an introductory course concerning the techniques of parallel computing and use of the Jülich supercomputers. The course consists of lectures and practical exercises. Each student will then be assigned to a supervisor, who is a member of staff. The students work on a topic of the supervisor's active field of research. In a colloquium at the end of the programme, the students will give presentations on their work and discuss their results with other students and scientists. They will also prepare a final report on their work. Information on the topics and results of previous guest student programmes can be found on the website given below.

## Compensation & Accommodation

The students will receive an expense allowance and are supposed to reside in Jülich for the entire duration of the programme. Research Centre Jülich will provide accommodation in the guest house of the research centre. Participants will be expected to fund their own travel to and from the JSC.

